

## Sport Camera – V40



### User Manual

## 5K PLAYER & COMPUTER HARDWARE REQUIREMENT

This camera is compatible with 5K video recording. if you want to playback 5K video files you recorded, your computer needs to install a player that supports 5K video. You can try QuickTime or VLC players.

#### Player download URL:

[https://support.apple.com/kb/DL837?viewlocale=en\\_US](https://support.apple.com/kb/DL837?viewlocale=en_US)

<https://www.videolan.org/vlc/> <https://www.5kplayencom/index-zh.htm>

At the same time, in order to ensure the smooth playback of 5K video on the computer, please make sure that the computer system you choose can meet the following minimum hardware specifications:

- Memory: 8GB RAM
- Video Graphics Card Core Processor: 1GB
- Storage: 7200 RPM SSD or HDD
- Graphics processor: Intel HD Graphics 5000 or higher
- Processor: Intel Core i7 or higher, GeForce GTX 650 Ti or higher, AMD A10-7800 APU, Integrated Graphic and AMD Radeon HD 7000 series or higher

## CAUTIONS

- This is a ultra HD action camera, It is normal for the housing to exert heat under use.
- Don' t expose the product directly to high temperatures over 45°C.
- Please properly protect well the lens and screen of camera after using.
- Keep it safe from falling and dropping.

- Keep it distance from any strong magnetic interference objects like electrical machine to avoid strong radio waves that might be damaging the product and affect the sound or image quality.
- In case of overheating, unwanted smoke from the device, unplug it immediately from the power outlet to prevent hazardous fire.
- Keep it safety from children while on charging.
- Stored the device in a cool, dry and dust free location.
- Do not modify the camera it in any way,if the camera has been detached,the warranty will be void.

## THE BASIC



- 1 - Lens
- 2 - 1.4 inch Front Screen
- 3 - 2.0 inch Screen / Beauty Button
- 4 - Charging Indicator
- 5 - Working Indicator
- 6 - Micro USB Port
- 7 - HD Output Port
- 8 - Micro SD Card Slot
- 9 - DC2.5 External microphone
- 10 - UP / Wi-Fi / Zoom in Button
- 11 - Down / Remote / Zoom out Button
- 12 - Speaker
- 13 - Mode / Power Button
- 14 - Built-in Mic
- 15 - Shutter / Select Button
- 16 - Battery Door

## **Tips :**

- Verify the camera is in Video Mode, Long Press and hold the Up Button to turn on Wi-Fi and press quickly Up Button to turn off Wi-Fi.
- Verify the camera is in Video Mode, Short press Down Button to switch to 1.4 inch screen, press Down Button again to quit.
- Verify the camera is in Photo Mode, long Press and hold the Up or Down Button to Zoom in/out photo.

## **GETTING STARTED**

Welcome to your new camera. To capture video and photos, you need a micro SD card (sold separately).

### **STORAGE/MICRO CARDS**

We strongly recommend to use the branded memory cards purchased from regular channels for maximum reliability and stability during recording and in high vibration activities.

- UHS-III rating at least for 4K Video resolution (at least 60MB/S or above read and writing speed)
- Capacity up to 128GB (FAT32)

#### **Tips:**

- Please format the micro SD, micro SDHC and micro SDXC memory card on the camera before using.
- Please insert the memory card in correct way if not , the card slot maybe damage by the wrong way.
- To keep your micro SD card in good condition, reformat it on a regular basis.
- Reformatting erases all of your content, so be sure to offload your photos and videos first.
- Don' t place your Micro SD card near strong magnetic objects to avoid data error or loss.

### **POWERING ON+ OFF**

#### **To Power On:**

Press and hold the Mode button for three seconds. The camera beeps while the camera status light is on. When information appears on the LCD display or the camera status screen, your camera is on.

#### **To Power Off:**

Press and hold the Mode button for three seconds. The camera beeps while the camera status light is off.

### **OVERVIEW OF MODES**

There are 4 modes: Video Mode, Photo Mode, Playback Mode and Shortcut

#### **Mode(System Setting Mode)**

The modes will shown below:



## QUICK OPERATION GUIDE

1) Verify the camera is in Video Mode or Photo Mode, and quickly swipe from right to left or swipe from left to right on the middle of the touch screen to switch between video mode and photo mode, as shown below:



2) Verify the camera is in Video Mode or Photo Mode , quickly swipe down on the touch screen to switch to the Shortcut Mode, tap" Wi-Fi" , " Voice" , "Date" ," Lock" and "Preference" icon quickly to set the camera,as shown below: To exit Shortcut Mode, quickly swipe up on the screen.



3) Verify the camera is in Video Mode or Photo Mode,Quickly swipe up on the screen to switch to the Mode Shift Mode, tap the icon "Video" or "Photo " to playback video or photo files as shown below: To exit Playback Mode, quickly swipe down on the screen.



## CUSTOMIZING YOUR CAMERA VIDEO SETTING

### Verify the camera is in Video Mode or Photo Mode

- Tap the video modes switch icon on the bottom left corner of the screen to video mode selection menu, then swipe up or down to cycle through the various option and tap the desired video mode.



- Tap the video modes settings icon on the bottom middle of the screen to video resolution, tap the video size or smoothness, then swipe left or right to cycle through the various option icon on the bottom middle of the screen and tap the desired video mode.



- Tap the video settings icon on the bottom right corner of the screen to video setting menu, then tap the Auto Mode icon or Professional Mode icon to set the desired option.



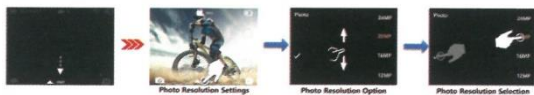
## PHOTO SETTING

Verify the camera is in Photo Mode,

- Tap the photo modes switch icon on the bottom left corner of the screen to photo mode selection, then swipe up or down to cycle through the various option and tap the desired video mode.



- Tap the photo resolution settings icon on the bottom middle of the screen to photo resolution, swipe up or down to cycle through the various option icon, then tap the desired photo size and tap "V " to confirm your selection.



- Tap the photo settings icon on the bottom right corner of the screen to photo setting menu, then tap the Auto Mode icon or Professional Mode icon to set the desired option.



## VIDEO MODE

To record video, verify the camera is in desired Video Setting option and set the desired video resolution.

- To Start Recording: To press the Shutter Button. The camera's blue Working Indicator will flash and a Red Dot will show on the screen while recording.
- To Stop Recording: To press the Shutter Button again. The camera Working Indicator stop flashing and the Red Dot disappear on the screen to indicate recording has stopped
- FAT32 format Micro SD card stops recording when the storage of each file is over 4 GB and starts to record again on a new file
- This camera automatically stops recording when the battery is out of power. Your video will saved before the camera powers off. The video will not be saved, and even the video will be damaged, if the battery is taken out or loses power during recording.
- Due to the battery's characteristics and environmental temperature requirements, such as high temperatures can cause the battery to expand. In high temperature environments, especially in the summer, when you use this camera as a dash camera, we strongly recommend that you remove the battery and use the car power directly, but when the car's engine is turned off, the camera will immediately turn off, the date & time set and last video recorded will not be saved

- This camera automatically stops recording when the SD card is full, if the looping record function is turned off. PHOTO MODE To capture photo, verify the camera is in desired Photo Setting option and set the desired photo resolution.
- To capture a photo: In the Photo mode, Press the Shutter Button. The camera will emit the camera shutter sound.
- To capture Time-Lapse Photo series Verify the camera is selected desired Time Lapse Photo mode, Press the Shutter Button, The camera will trigger continuous shooting at the set interval and TL duration, the camera will emit shutter sound each time a photo is taken. To stop Time Lapse Photo, Press the Shutter Button again.
- To capture a Burst Photo series: Verify the camera is selected desired Burst Photo option, Press the Shutter Button, the camera will emit shutter sound each time a photo is taken.
- To capture a Delay Timer Photo: Verify the camera is selected desired Delay Timer option, Press the Shutter Button, the camera initiates countdown and emit shutter sound each time a photo is taken.
- To capture a Long Exposure Photo: Verify the camera is selected desired Long Exposure option, Press the Shutter Button, the camera initiates BEEP and emit a shutter sound as soon as the photo is taken.

## **BATTERY**

The camera contains sensitive components, including the battery. Avoid exposing your camera to very cold or very hot temperatures. Low or high temperature conditions may temporarily shorten the battery life or cause the camera to temporarily stop working properly. Avoid dramatic changes in temperature or humidity when using the camera, as condensation may form on or within the camera.

### **BATTERY STORAGE AND HANDLING**

- Do not store in temperature above 140°F/60°C.
- Avoid exposing your camera to very cold or very hot temperatures. Low or high temperature conditions may temporarily shorten the battery life or cause the camera to temporarily stop working properly. Avoid dramatic changes in temperature or humidity when using the camera, as condensation may form on or within the camera.
- Do not dry the camera or battery with an external heat source such as a microwave oven or hair dryer.
- Damage to the camera or battery caused by contact with liquid inside the camera is not covered under the warranty.
- Do not store your battery with metal objects, such as coins, keys or necklaces. If the battery terminals come in contact with metal objects, this may cause a fire.
- Do not make any unauthorized alterations to the camera. Doing so may compromise safety, regulatory compliance, performance, and may void the warranty.
- Please do not throw the camera or its battery to the garbage, find a specific recycling point for it.

## **WARNING:**

- Do not drop, disassemble, open, crush, bend, deform, puncture, shred, microwave, incinerate or paint the camera or battery.
- Do not insert foreign objects into the battery opening on the camera.
- Do not use the camera or the battery if it has been damaged - for example, if cracked, punctured or harmed by water. Disassembling or puncturing the battery can cause an explosion or fire.

## **CHARGING THE BATTERY**

1. Connect the camera to USB power supply (5V/1A commended).
2. The charging status light remains ON while the battery is charging.
3. The charging status light will turn OFF when the battery is fully charged.

### **Notes:**

- Charging time: 4-hours for 5V 1A power supply
- Please make sure the camera is shuttled down while charging.
- Remove the battery before using as a dash camera and use 5V/1A brand-name car charger.

## **MAXIMIZING BATTERY LIFE**

If the battery reaches 0% while recording, the camera saves the file and powers off.

To maximize battery life, follow these guidelines when possible:

- Turn off Wireless Connections
- Capture video at lower frame rates and resolutions
- Use Screen Saver setting.

## **Wi-Fi APP**

The Wi-Fi App lets you control your camera remotely using a smart phone or tablet. Features include full camera control, live preview, playback and sharing of selected content and more.

## **CONNECT TO THE iSmart DV2 APP**

1. Download iSmart DV2 app to your mobile device from the Apple App Store or Google Play;
2. Turn on the camera, then Verify the camera is in Shortcut Mode, tap the Wi-Fi icon to turn on Wi-Fi;
3. Turn on Wi-Fi Setting of your mobile device, connect to the Wi-Fi SSID "iSmart DV" ;
4. Enter the password: "1234567890" ;
5. Open the app "iSmart DV2" on your smart phone or tablet.
6. Tap "Add new camera"
7. Tap "Wi-Fi Connect" ;

**Note:**

Press Up Button for seconds again if you want to turn off Wi-Fi.

**DOWNLOADING AND SHARE YOUR CONTENT**

1. Open the "iSmart DV2" app.
2. Tap "Albums icon" at the left corner of the bottom screen.
3. Select files in "Photos" or "Videos" at the top of the screen.
4. Tap "Download icon" at the right corner of the bottom screen to download
5. Save or Share your content.

**The iSmart DV2 App is compatible with smart phone and tablet listed below:**

For Apple: iPhone6(plus), 6s(plus), 7, iPhone Air & Mini (above IOS 12)

For Android: above Android 7.0)

Please Scan the following QR code to download and install "iSmart DV2" app to your phone:



For Andriod Device



For IOS Device

**App available on:****NOTES:**

- The camera Wi-Fi bandwidth is relatively narrow, and its signal will be affected by distance, other signals, electromagnetic waves, obstacles and other factors. 2 to 5 seconds signal delay is normal Wi-Fi distance is about 5-10 meters.



- When the phone and camera connect through Wi-Fi, the power of the camera will increase. The camera's temperature will rise rapidly, and the consumption of camera batteries will also increase. This is a normal phenomenon.

- Since many kinds of phones in the market, and the phone system is constantly updated, iSmart DV app needs time to synchronize timely updates, if iSmart DV app can not be compatible to your phone, please tell us your phone' s model and system version information, we will in the first time synchronize your phone.

- If you find your phone can not connect the camera's WIFI, please confirm that your connection is correct, if yes, and still can not connect. Please delete the Wi-Fi SSID of the camera in your phone Wi-Fi setting and reconnect. If necessary, you can also delete the iSmart DV app from your phone and re-download and re-install it. **2.4G REMOTE** The remote controller is only applicable to cameras with remote control functions. If the camera you purchased is not equipped with remote control module, the following functions will not be available, and the remote control and its accessories will not included in the package.

Place the Remote Control On Your Wrist and Acquiesce Ultra-convenient Control for Hiking, Biking, Skiing, Bungee and more while installing the camera on your Helmet or other place.

## **2.4G Wireless Remote:**

Splash-proof only, not waterproof / Range 5M

### **HOW TO TURN ON/OFF THE REMOTE:**

Select ON/OFF in the Setting Menu to turn on/off the 2.4G remote controller.

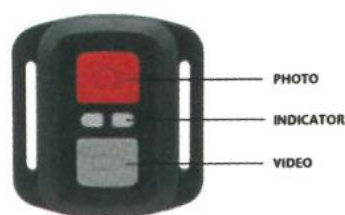
### **Video**

To start recording: Press the Video Button.

To stop recording: Press the Video Button again.

### **Photo**

To take a photo: Press the Photo Button.



### **NOTES:**

- Verify the camera is in Video/Photo Mode first, if the camera is set in Playback or Setting Menu, the camera can not be controlled by the remote.

- Be sure to remove the remote control battery and put it in a safe and reliable place , if do not use for a long time.

- The remote control will always be in standby state. If the indicator is not on, the battery was out of power. In order to confirm the normal use of the remote control, please replace the remote control battery regularly and in time as following steps:



**Step 1:** Use a 1.84 mm tip screwdriver (not included) to remove the 4 screws on the back cover, allowing you to open it.

**Step 2:** Remove another 4 screws on PCB board.

**Step 3:** Lift the PCB board and slide out the battery, as shown in the picture.

**Step 4:** Instal the new battery, keeping the + pole facing up.

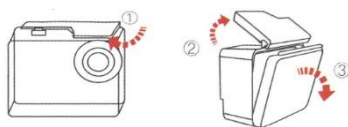
**Step 5:** Install all 4 screws back onto the PCB board.

**Step 6:** Install the 4 screws back into the cover.

### **WATERPROOF CASE**

Specially designed for diving, surfing, snorkeling and other water sports activities. The waterproof case does not only offer greater waterproof protection to your camera, it also offers extra protection against dust, scratches and shocks. Light and easy to carry, excellent PMMA material endows it with high quality. With the use of the waterproof case, you can record activities even 30M under water and it won't damage the shooting effect, clear and vivid. Your movement and photographic effect won't be affected by anti-surf pressure. Convenient to link camera with other accessories mount through this waterproof case.

### **HOW TO OPEN:**

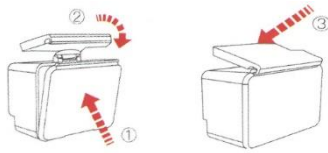


1) Pick the black latch up on the top of the case.

2) Pull up the buckle of the case.

3) Open the back cover of the case.

### **HOW TO CLOSE:**



- 1) Please close the back door of the case.
- 2) Pull down the latch and lock it to the back door.
- 3) Press down the buckle.

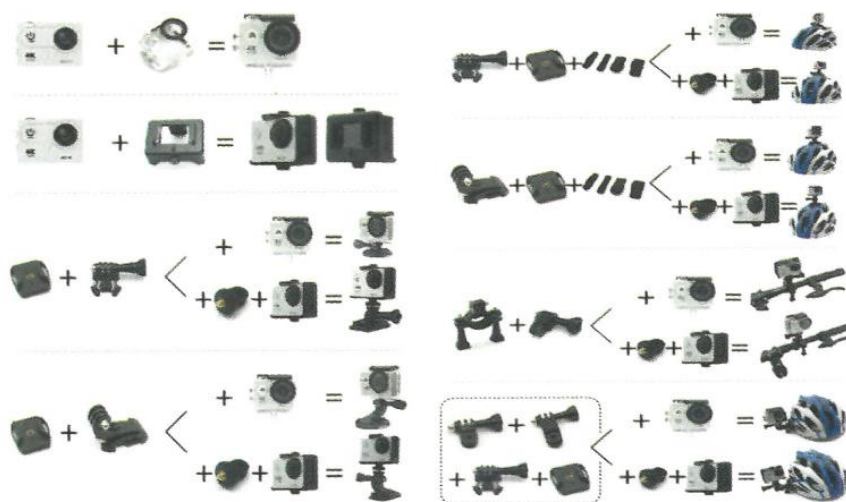
**Tips:**

1. Please tear the protective films on the waterproof case lens before shoot/record;
2. To achieve better waterproof performance, the voice record within the waterproof case will be weakened.

**NOTES:**

- In order to capture a clear video or photo, please tear off the lens protection film of the waterproof shell before use, and protect well the lens window from scratch after use.
- Before sealing the waterproof case, keep the camera housing's White Silicone Seal Ring clean, a single hair or grain of sand cause a leak. You can test by closing the case without inserting the camera. Submerge the case completely in the water for about a minute. Remove the case from the water, dry off its exterior with a towel, and then open the case. If the interior is dry, the case is safe for use under water.
- Before sealing the waterproof case, make sure the waterproof case is sealed well before use. If the white silicone sealing ring is found to be hardened, deformed or damaged, please stop using this water tank and replace the new waterproof shell in time
- Please dry it in time after use, otherwise the waterproof shell metal button will dust and reduce the waterproof performance. After use in in seawater or seaside, you will need to rinse the outside of the housing with fresh water and then dry. This will prevent corrosion of the hinge pin and salt buildup in the seal, which can cause failure. Do not flush the interior with water
- When use the camera with the waterproof in low temperature, such as Winter, Rainy Day, Underwater and so on, please do the anti fogging treatment so as to avoid the blurred video. It is recommended to add anti-fog film; insert the anti-fog film into the waterproof case to prevent the lens from fogging in low temperature or humid environment;
- Keep it safe from falling and dropping and high temperature above 80°C.
- Waterproof shell is vulnerable product, we strongly recommend ,according to the usage of the environment and frequency, to replace the waterproof shell in time.

## Mounting Your Camera



Attach your camera to helmets, gear and equipment. The following assembly methods are for reference only!

### Notes:

- Our standard accessories are the basic version. If you need different types of accessories, you need to purchase them separately.
- With different types of accessories, the camera can be used in different occasions. Please purchase different types of accessories kit according to actual needs.
- Our cameras can be partially compatible with accessories from other brands.

## Wireless Microphone Instructions

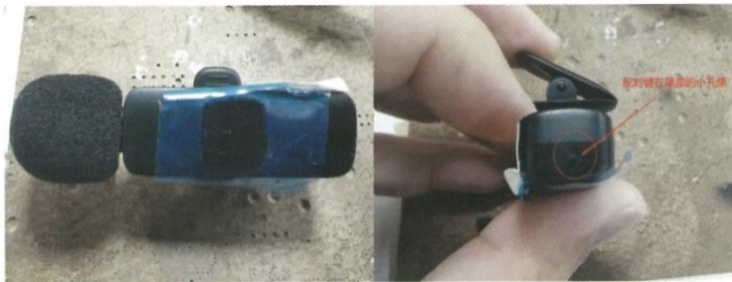
The camera wireless microphone switch button definition Turn on the microphone :

Turn on - Enter pairing – Pairing - Reconnect to the last pairing - if there is no connection, it will prompt failure. During this period, if the pairing is successful, the camera will pop up a window for successful matching. After successful pairing, there will be a wireless microphone icon for recording using a wireless microphone, which is different from the icon for recording with the camera microphone. After the pairing is successful, if you wish to revert to using the camera's internal microphone, turn off the wireless microphone , the machine will use the camera microphone to record, and the wireless microphone will not be disconnected from the pairing.



## Wireless microphone

1. Press and hold the power button for 3 seconds to turn on, long press the power button for 3 seconds to turn off
2. Press and hold the pairing button for 3 seconds to enter the pairing mode, the pairing time is 10 seconds, and the blue light flashes quickly. If the match is unsuccessful, it will reconnect to the previous pairing. (The pairing key is in the small hole at the end of the microphone)
3. When the microphone is turned on, the blue light flashes slowly, the blue light flashes quickly when it enters the pairing mode, and the blue light is always on when the pairing is successful.
4. After the pairing is successful, short press the power button to enter the noise reduction mode. When entering the noise reduction mode, the blue light turns green and is always on. Short press the power button again to return to the normal recording mode, the green light turns blue and is always on.
5. If there is no operation within 5 minutes after the microphone is turned on, it will automatically shut down
6. When the power of the microphone is low, the indicator lights up red



## Pairing

Turn on the wireless microphone switch on the camera, and at the same time (within 5-10 seconds) long press the pairing button on the microphone side (the pairing button is in the small hole at the end of the microphone). If the pairing is successful, a pop-up window on the camera side indicates that the pairing is complete, and the blue light on the microphone side is always on. If the pairing fails, a pop-up window on the camera side indicates that the pairing failed. Repeat the previous pairing operation.